

Sportello U. Edilizia : Comune di San Francesco al Campo (TO)

Arch. BERIA Daniela
C.F.: BREDNL73RG0E379E
N. i. Albo 6410

Via Destefanis 23/A
10070 - Vauda Can.se - To -

PROGETTO :
Piano di Recupero in Area RB¹
(ai sensi art. 7 del PRGC - intervento di tipo f)

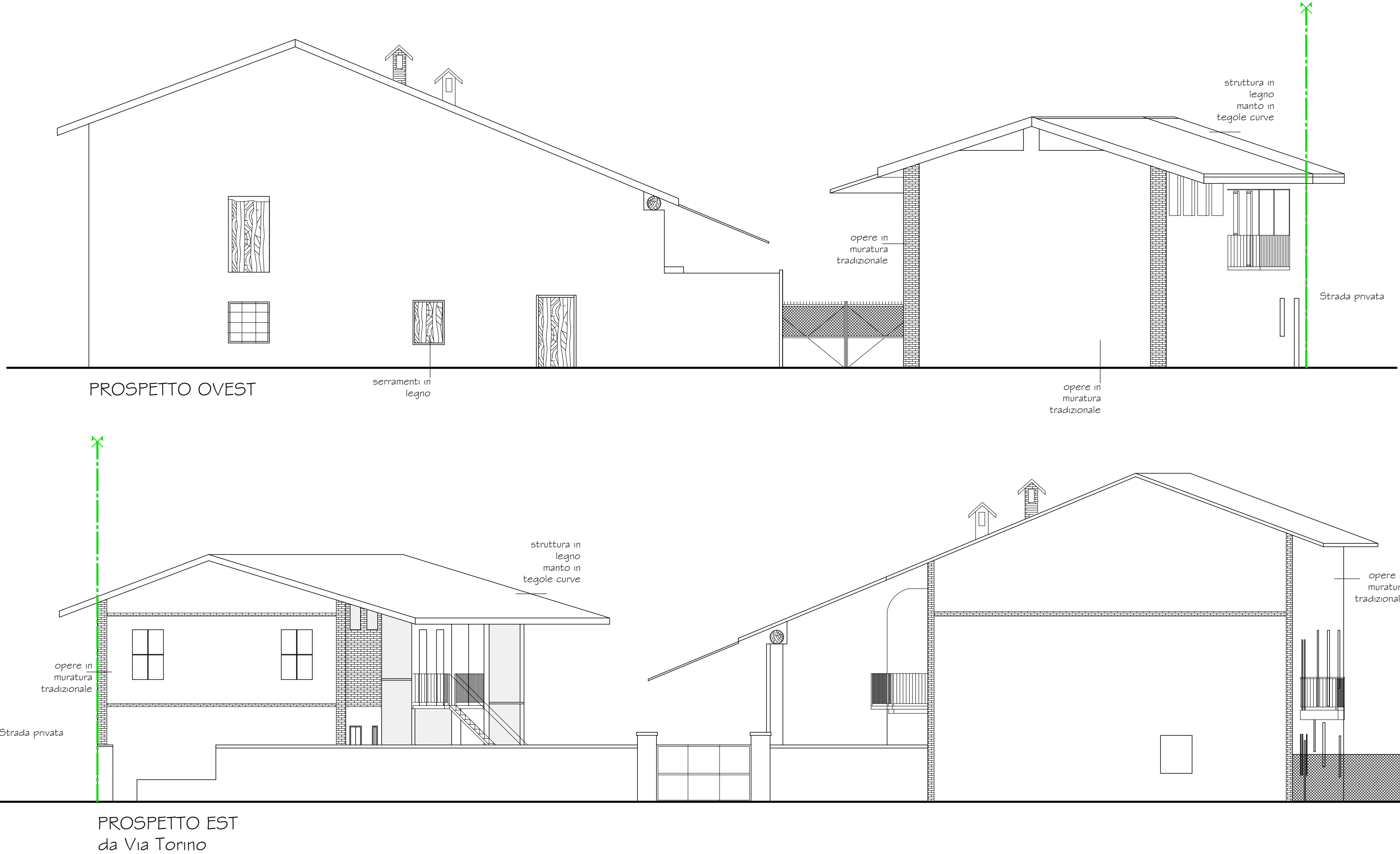
Proprietà :
Soc. IMMOBILIARE INCIPIT S.r.l.
P.Iva: I 1737750015

UNITA' OPERAIA ALTO CANAVESE
COOPERATIVA EDILIZIA A PROPRIETA' INDIVISA
P.Iva.: 01962160014

Data Novembre 2018	Scala 1:100	Tav. n. 05 a2 Rilevo stato di fatto	Specifica: Prospetti e calcoli planovolumetrici
-----------------------	----------------	--	---

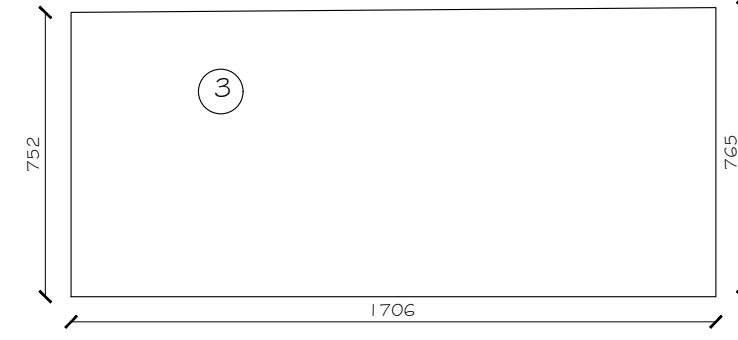
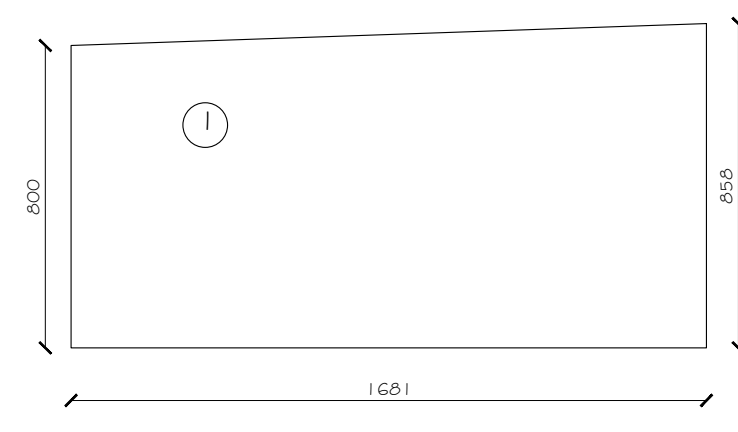
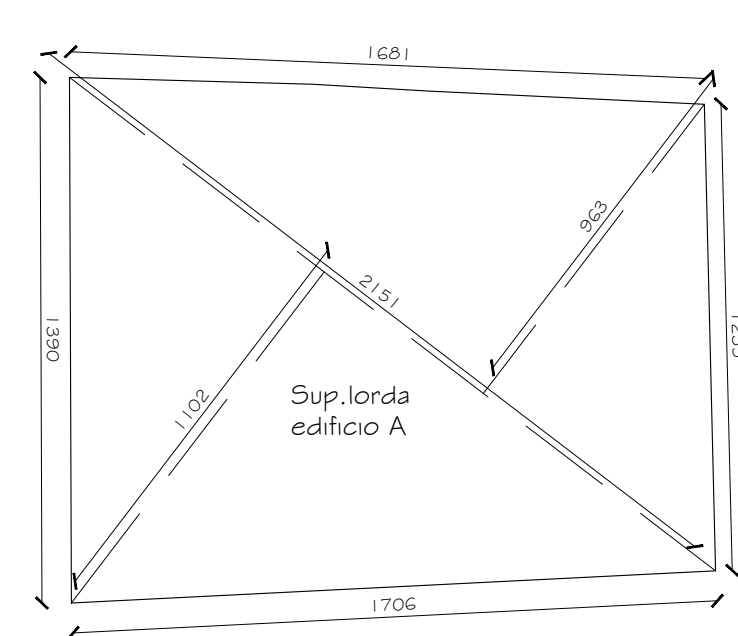
Progettista Berna Daniela	Proprietà INCIPIT S.r.l. U.O.A.C.
------------------------------	---

Scala 1:750

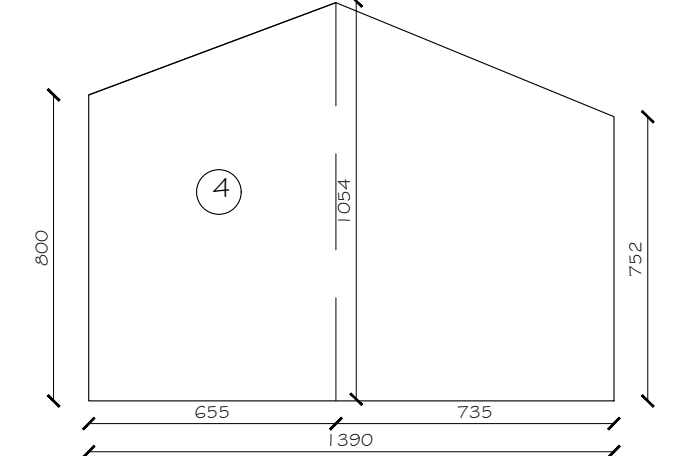
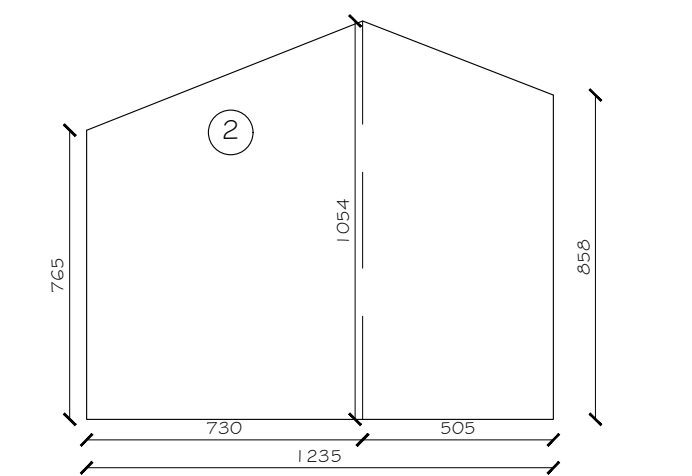


VERIFICA VOLUMETRIA ESISTENTE

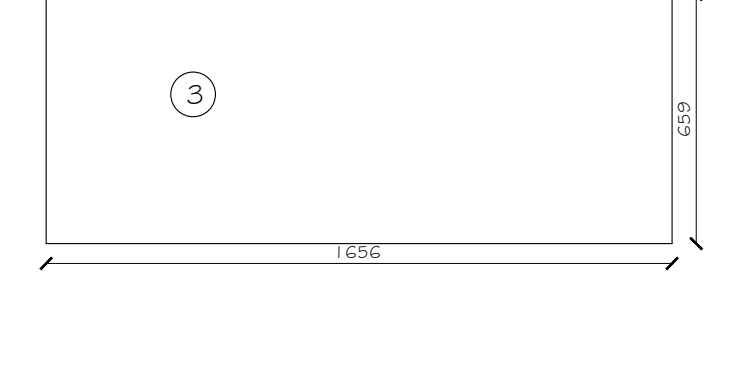
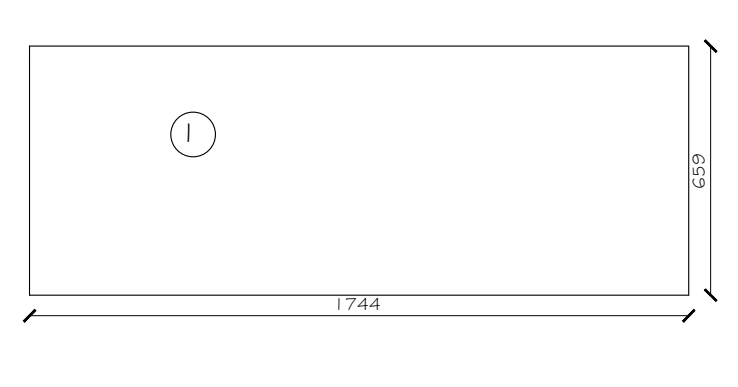
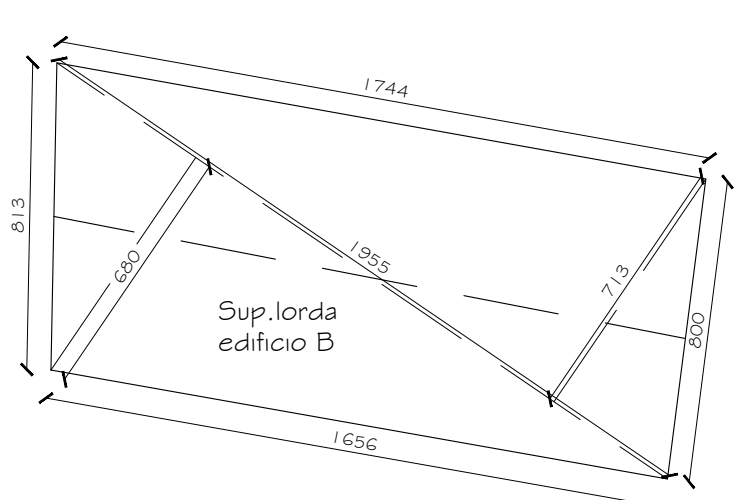
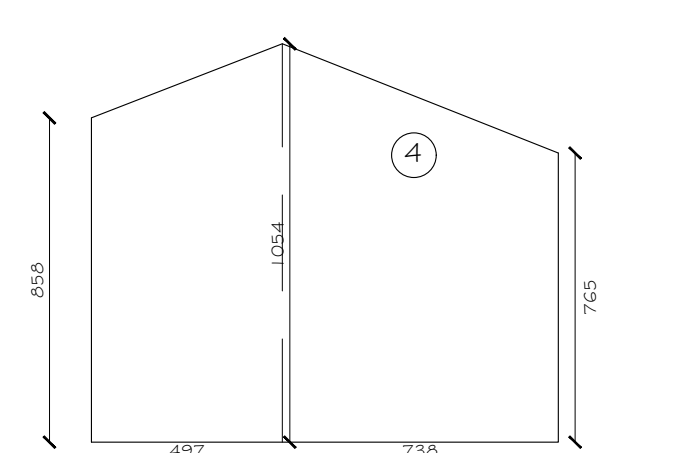
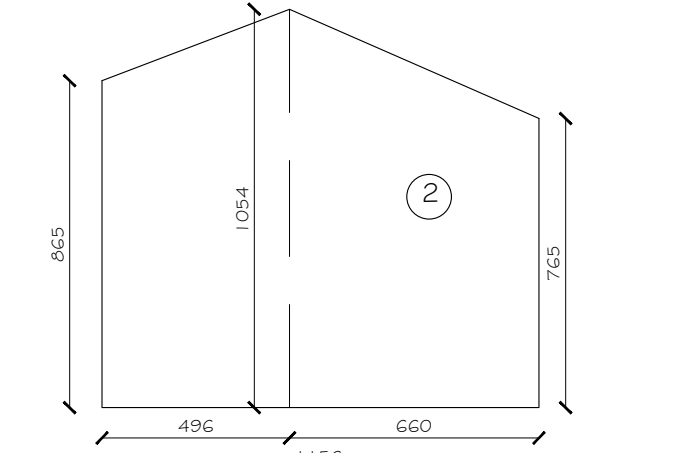
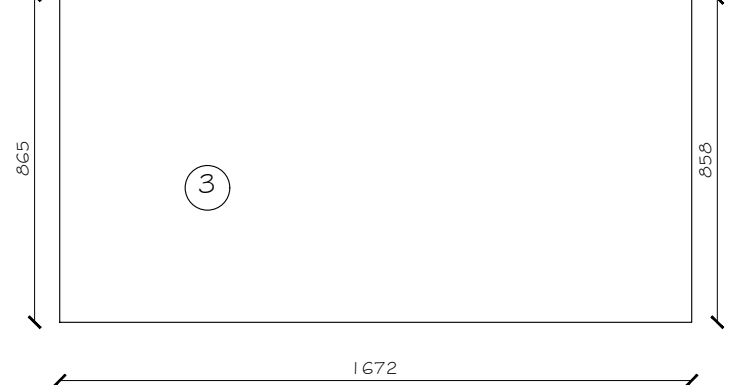
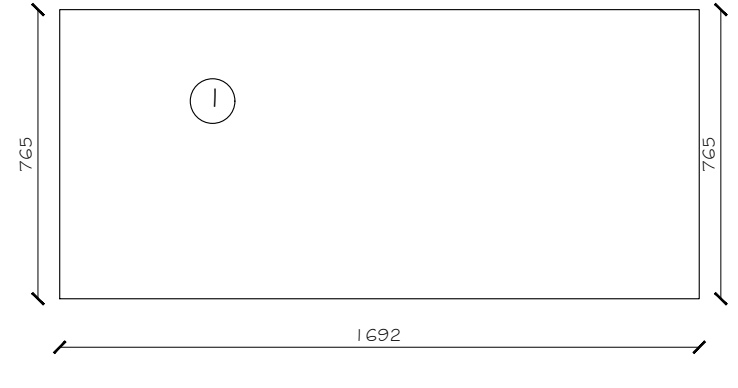
Scala 1:200



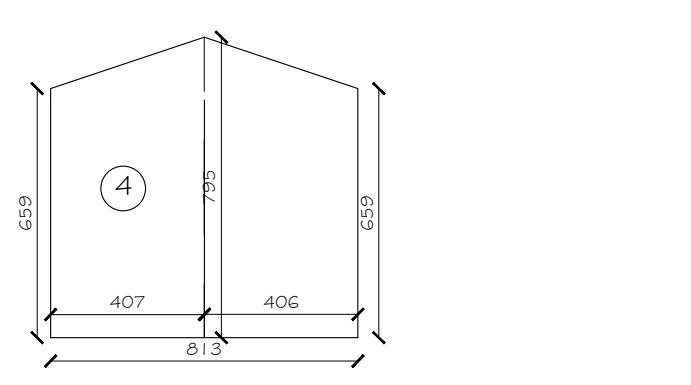
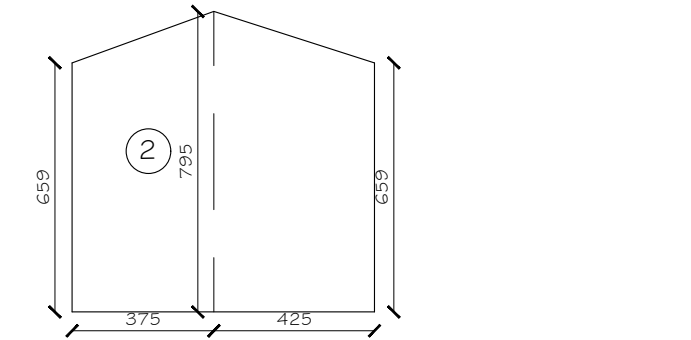
EDIFICIO "A"	
Calcolo H m. convenz.:	Sup. 1: mt. 18.54+8.00+16.81/2=139.35 mq.
sup. fronti/Perimetro	Sup. 2: mt. 17.95+6.59+3.75/2=17.95+6.59+3.75/2=14.67 mq.
	Sup. 3: mt. 17.52+17.65+17.04/2=28.40 mq.
	Sup. 4: mt. 17.95+6.59+4.07/2=17.95+6.59+4.07/2=14.67 mq.
Totale sup. 1-2-3-4	139.35+14.67+28.40+14.67=207.09 mq.
Calcolo sup. lorda edificio A	mt. 13.90+17.06+12.35+16.81=60.12 mt.
Calcolo perimetro edificio A	mt. 51.05/60.12=8.49 mt.
H media convenzionale	mt. 51.05/60.12=8.49 mt.
Tot. sup. fronti/Perimetro	mq. 222.09x8.49 mt. = 1885.85 mc.
Volumetria totale edificio A	



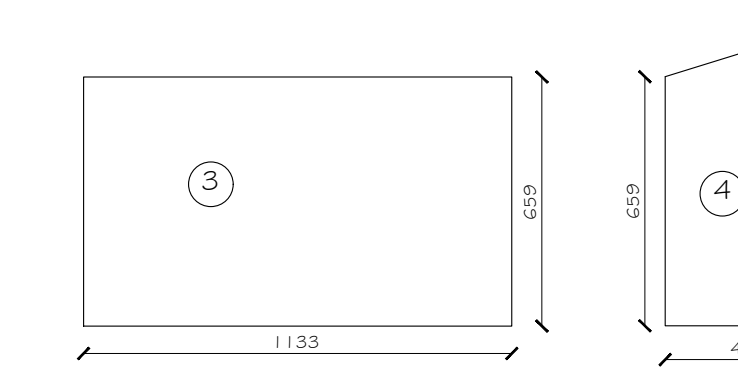
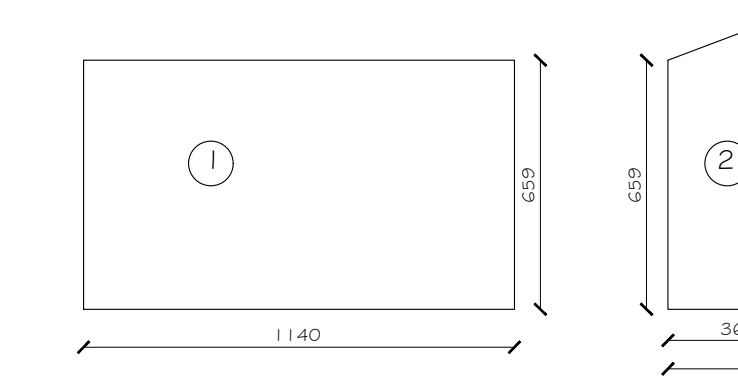
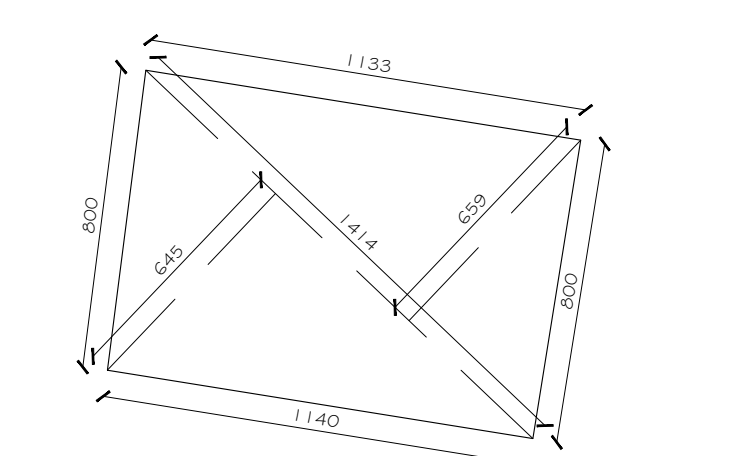
EDIFICIO "C"	
Calcolo H m. convenz.:	Sup. 1: mt. 17.95+6.59+3.75/2=17.95+6.59+3.75/2=14.67 mq.
sup. fronti/Perimetro	Sup. 2: mt. 17.52+17.65+17.04/2=28.40 mq.
	Sup. 3: mt. 17.95+6.59+4.07/2=17.95+6.59+4.07/2=14.67 mq.
Totale sup. 1-2-3-4	139.35+14.67+28.40+14.67=207.09 mq.
Calcolo sup. lorda edificio C	mt. 13.90+17.06+12.35+16.81=60.12 mt.
Calcolo perimetro edificio C	mt. 51.05/60.12=8.49 mt.
H media convenzionale	mt. 51.05/60.12=8.49 mt.
Tot. sup. fronti/Perimetro	mq. 222.09x8.49 mt. = 1885.85 mc.
Volumetria totale edificio C	



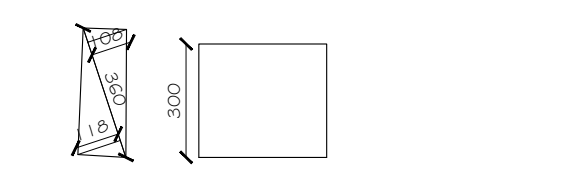
EDIFICIO "B"	
Calcolo H m. convenz.:	Sup. 1: mt. 17.95+6.59+3.75/2=17.95+6.59+3.75/2=14.67 mq.
sup. fronti/Perimetro	Sup. 2: mt. 17.52+17.65+17.04/2=28.40 mq.
	Sup. 3: mt. 17.95+6.59+4.07/2=17.95+6.59+4.07/2=14.67 mq.
Totale sup. 1-2-3-4	139.35+14.67+28.40+14.67=207.09 mq.
Calcolo sup. lorda edificio B	mt. 13.90+17.06+12.35+16.81=60.12 mt.
Calcolo perimetro edificio B	mt. 51.05/60.12=8.49 mt.
H media convenzionale	mt. 51.05/60.12=8.49 mt.
Tot. sup. fronti/Perimetro	mq. 222.09x8.49 mt. = 1885.85 mc.
Volumetria totale edificio B	



EDIFICIO "D"	
Calcolo H m. convenz.:	Sup. 1: mt. 17.95+6.59+3.75/2=17.95+6.59+3.75/2=14.67 mq.
sup. fronti/Perimetro	Sup. 2: mt. 17.52+17.65+17.04/2=28.40 mq.
	Sup. 3: mt. 17.95+6.59+4.07/2=17.95+6.59+4.07/2=14.67 mq.
Totale sup. 1-2-3-4	139.35+14.67+28.40+14.67=207.09 mq.
Calcolo sup. lorda edificio D	mt. 13.90+17.06+12.35+16.81=60.12 mt.
Calcolo perimetro edificio D	mt. 51.05/60.12=8.49 mt.
H media convenzionale	mt. 51.05/60.12=8.49 mt.
Tot. sup. fronti/Perimetro	mq. 222.09x8.49 mt. = 1885.85 mc.
Volumetria totale edificio D	



POLLAIO	
Calcolo sup. lorda pollaio	mt. 13.60+1.08/2=14.07 mq.
Volumetria	mq. 4.07 x 3.00h=12.21 mc.



VOLUMETRIA TOTALE ESISTENTE	
Edificio "A"	mc. 1885.85
Edificio "B"	mc. 927.32
Edificio "C"	mc. 1731.04
Edificio "D"	mc. 633.35
Pollaio	mc. 12.21
VOLUMETRIA TOTALE	mc. 5189.80